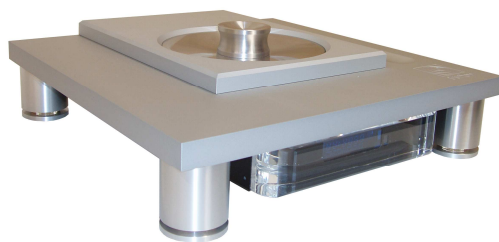


ΥΨΙΛΟΝ

Υ Ψ Ι Λ Ο Ν

CDT 100

YPSILON
CD TRANSPORT/CD PLAYER



OWNERS MANUAL

V2 01/01/2008

©All rights reserved

INTRODUCTION

Thank you for trusting YPSILON ELECTRONICS™. We assure you that you have made an excellent purchase. Your CD transport/CD player is made only by the best and most reliable materials and we guarantee it will offer you many hours of music enjoyment.

Every CD transport/CD player, before delivery, is thoroughly checked and measured for ensuring trouble free operation.

Our goal is to offer you devices of the highest standard of build quality and sonic performance.

PLACEMENT OF THE CDT-100 CD TRANSPORT / CD PLAYER

The **CDT-100** is designed to reduce interference from external magnetic and radio fields. While placement is not critical, known magnetic fields should be avoided.

A solid and sturdy surface should be used as this CD transport/CD player has a substantial weight.

CONNECTING CABLES

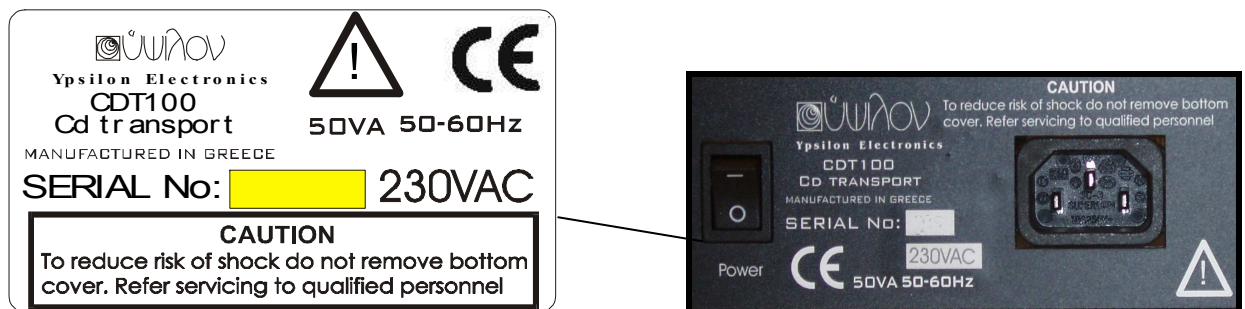
For best results it is recommended to keep the output cables as short as possible. Do not use longer cables than needed. For more information contact your dealer.

CONNECTING TO THE MAINS OUTLET

Your **CDT-100** CD transport/CD player has a description of the appropriate operation voltage on its back panel. Please make sure not to overlook the specifications. In case you need to operate it in a region with no complying voltage, contact your dealer or the factory. The power cable that you will use must be at least 3 x 1.5 square mm and grounded to the mains outlet.

The on/off switch for the **CDT -100** is located on the back panel.

This device is **Class I** and the following safety rules apply:



According to guide 73/23/EEC for low voltage and guide 89/336/EEC (EMC) this device is marked with **CE**.

CAUTION

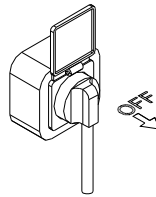
**DO NOT ATTEMPT TO
OPEN THIS DEVICE.
IN CASE OF
MALFUNCTION CONTACT
YOUR DEALER OR THE
MANUFACTURER**



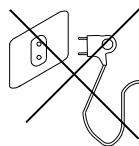
**ONLY USE THE VOLTAGE
PRINTED ON REAR PANEL**

WARNING: Before any maintenance or placement /connection takes place
disconnect the device from electrical outlets.

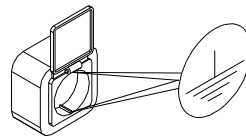
DISCONNECT THE DEVICE



WARNING: Never use electrical outlets without earth



Use only electrical outlets that are earthed.



IN CASE OF FAULT

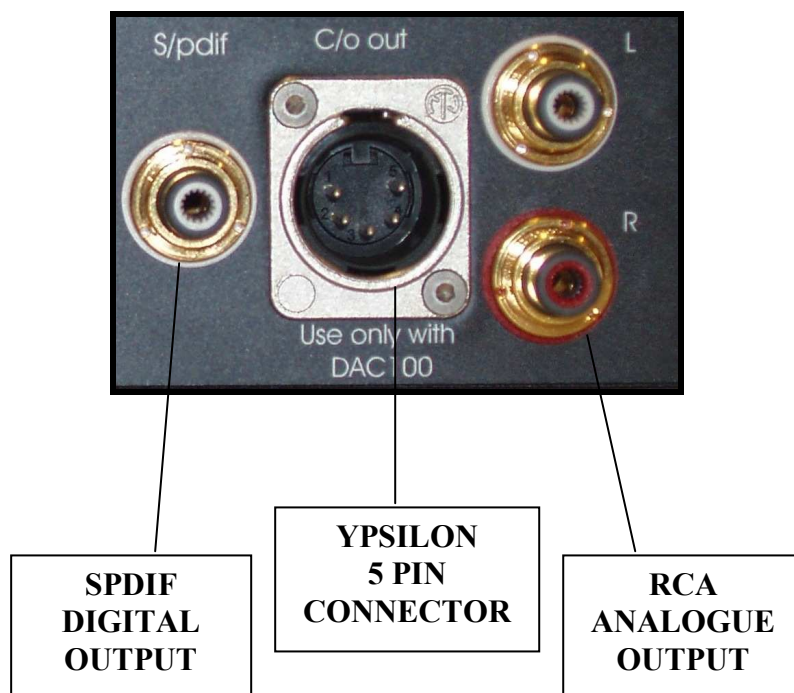


In case of fault **never** open device. Return to authorized technical agent or manufacturer.

In case of part changing only the exact same parts should ever be used and replaced by authorized staff or manufacturer. Otherwise this device is out of Guarantee and will not be compliant with international rules and regulations.

CONNECTING OUTPUT CABLES

There are three types of output connectors on the back panel of the **CDT -100**. Two RCA (left- right) analogue outputs, one RCA SPDIF 75 Ohm digital output and one 5- pin analogue current output connector for connection only with the **YPSILON DAC-100**.



YPSILON 5-pin CONNECTOR

The dedicated YPSILON 5-pin connector is only used when connecting to **YPSILON DAC-100** D/A converter.

When connecting the output cable (provided with **DAC-100**) the analogue circuit in the **CDT-100** is by-passed and the signal from the dac chip output is connected straight to the analogue circuit of the **DAC-100**

OPERATION

When all connections have been made the cd transport is ready to be used. After the device has been turned on the “no disc” message will illuminate on the display. After lifting the top the display will illuminate “OPEN”, remove the clamper, position a compact disc and replace the clamper. Only after replacing the top will the compact disc be read.

There will be a flashing “-----” illuminating on the display until the compact disc is read and then the display will show the compact disc information. i.e. number of tracks and total playing time.



Displayed when no disc in player.



Displayed when top is open.



Displayed when reading disc.



Displays disc information.

REMOTE CONTROL

The **CDT-100** remote control has eight buttons.

Starting from the top the first button is marked “S” and is used to set the **CDT-100** in standby mode.

The next button down is the search back button marked “<<”, next button is the search forward button and is marked “>>”. These two buttons are used to search the playing track.

Further down are the ,track back and track forward buttons marked “<” and “>” used to move to the previous or next track.

Moving down is the pause button marked “||” used to pause the playing track.

Next is the stop button marked “□” .

Finally the play button is marked “▷” .



SPECIFICATIONS

DIGITAL OUTPUT	SPDIF(75 ohm) RCA
ANALOGUE OUTPUT	RCA
ANALOGUE CURRENT OUTPUT	YPSILON 5 pin CONNECTOR
OUTPUT VOLTAGE	2,5 Vrms
OUTPUT IMPEDANCE	2,5 Kohm
DAC chip 24bit	Non-oversampling
POWER CONSUMPTION	Typically 20W
DIMENSIONS	400x120x400 (WxHxD)mm
WEIGHT	20 Kgr



Specifications may change without notice.